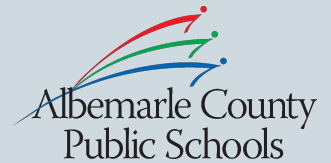




# **REDISTRICTING ADVISORY COMMITTEE FOR THE EXPANSION OF CROZET ELEMENTARY**

---

COMMUNITY FEEDBACK  
NOVEMBER 4, 2021



# STUDY OBJECTIVE

The purpose of this study is to address current and projected overcrowding at Brownsville Elementary. The proposed scope of the study will involve Brownsville and Crozet Elementary Schools only.

# GUIDING PRINCIPLES

Attendance areas will serve the district for at least 3-5 years with a goal of 5-7 years

Attendance areas will be largely contiguous

Walk areas for each school will be considered

Transportation routes will be as efficient as possible, giving consideration to minimizing ride times within acceptable parameters

Neighborhoods will be assigned to the same school whenever possible

Greater demographic balance amongst impacted schools will be strived for where feasible

Grandfathering existing students will be considered by the Board on a study by study basis.

# SCHEDULE



August 2021	<p>School Board approves scope of study and directs Superintendent to convene committee and conduct study</p> <p>Superintendent advertises and receives applications for the committee</p>
September 2021	<p>Superintendent appoints committee members and begins sharing information</p> <p>Initial meeting of redistricting committee</p>
October 2021	<p>Committee meets two times to develop multiple redistricting scenarios</p>
November 2021	<p>Two community meetings held to share scenarios and receive feedback</p> <p>Committee meets to finalize recommendation to the Superintendent</p>
December 2021	<p>Superintendent presents his recommendation to School Board</p>
January 2022	<p>School Board holds a public hearing</p> <p>School Board votes on the Superintendent's recommendation</p>
February - August 2022	<p>Families are notified and transition activities take place</p>
2022-23 School Year	<p>New boundaries go into effect</p>

# FOLLOW OUR PROCESS

## VISIT OUR WEBPAGE

Visit the webpage for the Brownsville and Crozet Redistricting study to view the background, scope, committee meeting schedule and more.

## LIVESTREAM OUR MEETINGS

Livestream the committee meetings to listen in on the conversation around redistricting. This link can be found on the webpage.

## EMAIL THE COMMITTEE

We have established an email address dedicated to this redistricting. Please note that this email is only to submit feedback and no response will be provided.

[k12albemarle.org/redistricting](https://k12albemarle.org/redistricting)

|

[RAC@k12albemarle.org](mailto:RAC@k12albemarle.org)

# TONIGHT'S PURPOSE

- Share potential redistricting scenarios with the community and receive feedback.



# SCENARIOS

**Need the full map for original scenario 2**



# SCENARIO 2

Grayrock (25)

Rt 240 to Oak Dr (7)

Waylands/Bargamin (32)

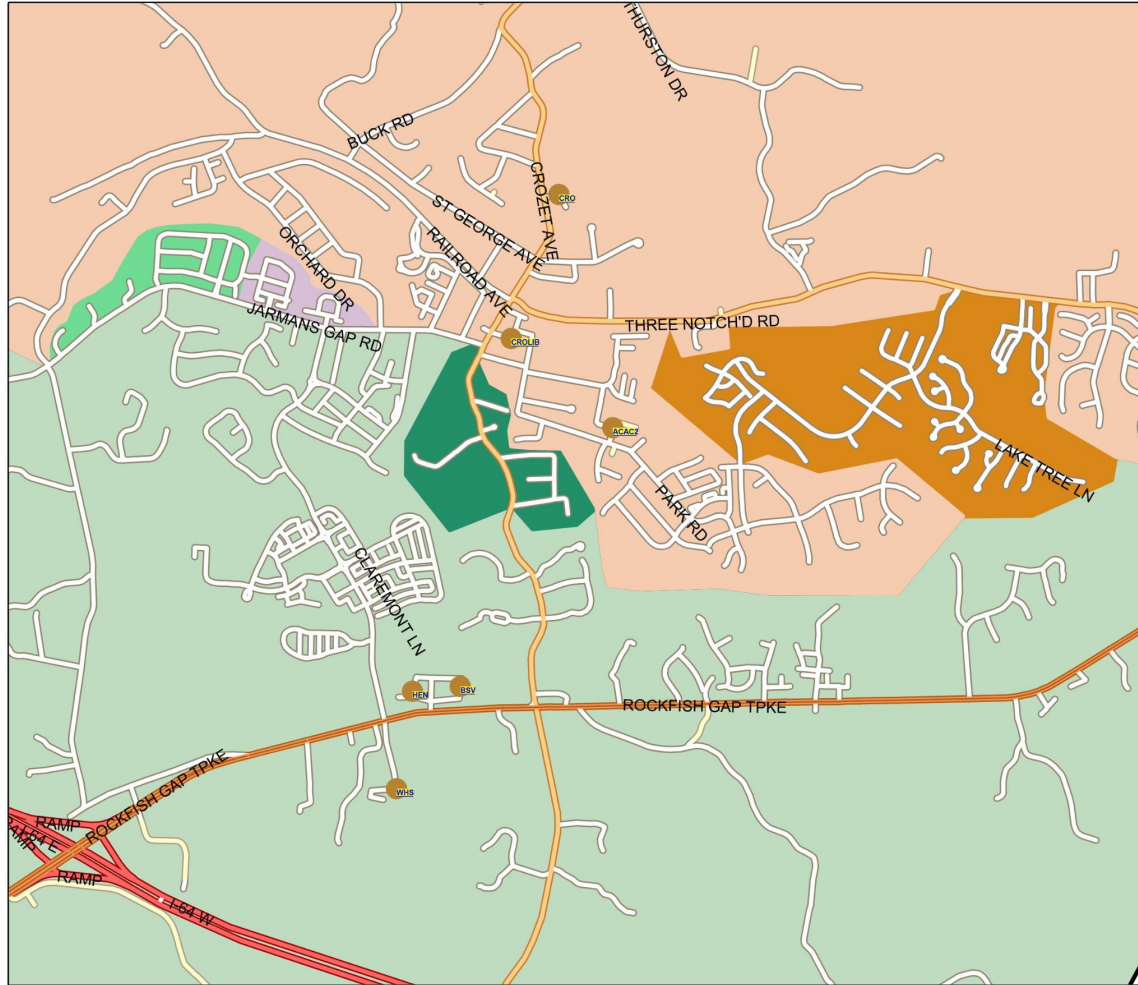
Western Ridge/Foothill  
Crossing/Wickham Pond (162)

**K-5 students moved: 226<sup>1</sup>**

**Total K-5 Crozet Students: 536**

**Total K-5 Brownsville Students: 510**

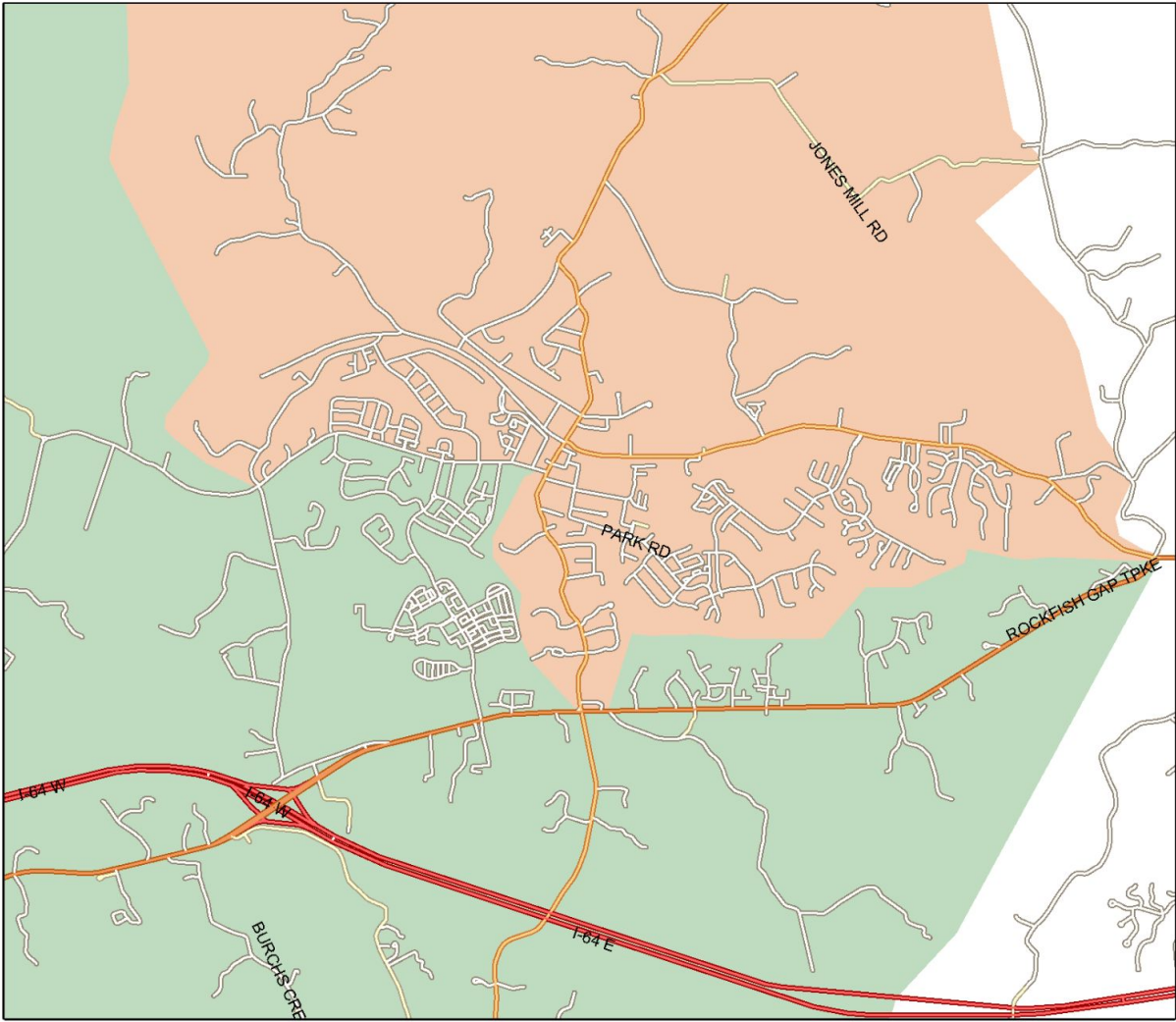
<sup>1</sup>Does not include preschool. Based on current year student information only and does not reflect future years.



## DEMOGRAPHIC IMPACT – SCENARIO 2

School		Race/Ethnicity			Economically Disadvantaged	English Learner	Difference in Enrollment
		Black	Hispanic/Latino	White			
Brownsville	Before	2.21%	4.42%	82.18%	12.02%	1.66%	-226
	After	2.66%	4.92%	83.20%	16.19%	1.23%	
Crozet	Before	1.56%	8.44%	84.06%	19.69%	2.19%	226
	After	1.44%	6.29%	82.37%	12.77%	2.34%	

# SCENARIO 2.1



# SCENARIO 2.1

Grayrock (25)

Rt 240 to Rt. 250 (34)

Waylands/Bargamin (32)

Western Ridge/Foothill

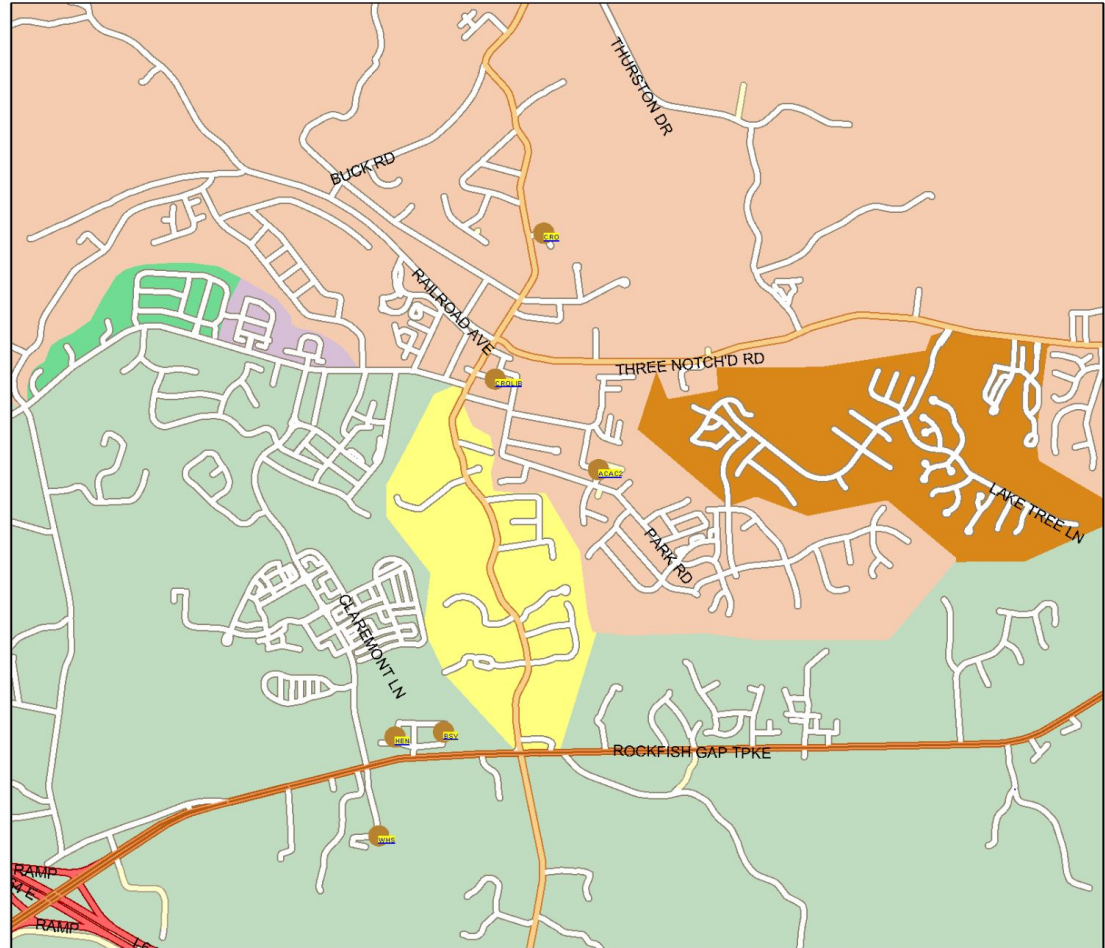
Crossing/Wickham Pond (162)

**K-5 students moved: 253<sup>1</sup>**

**Total K-5 Crozet Students: 563**

**Total K-5 Brownsville Students: 483**

<sup>1</sup>Does not include preschool. Based on current year student information only and does not reflect future years.

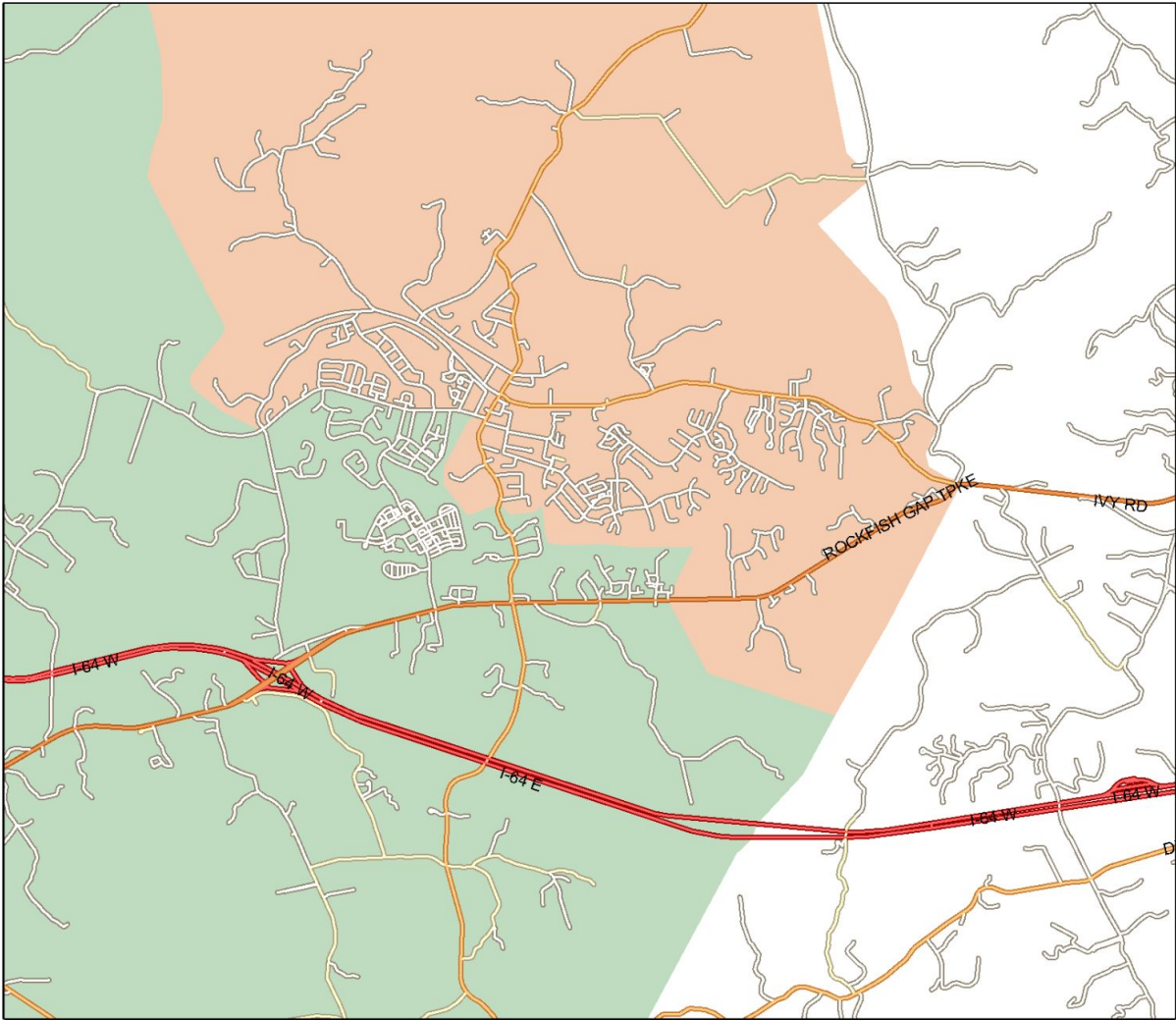


# DEMOGRAPHIC IMPACT – SCENARIO 2.1

School		Race/Ethnicity			Economically Disadvantaged	English Learner	Difference in Enrollment
		Black	Hispanic/Latino	White			
Brownsville	Before	2.21%	4.42%	82.18%	12.02%	1.66%	-253
	After	2.83%	5.22%	83.70%	17.17%	1.30%	
Crozet	Before	1.56%	8.44%	84.06%	19.69%	2.19%	253
	After	1.37%	5.99%	82.02%	12.16%	2.23%	



# SCENARIO 3



# SCENARIO 3

East of Clover Lawn to Mechums  
River (19)

Grayrock (25)

Rt 240 to Oak Dr (7)

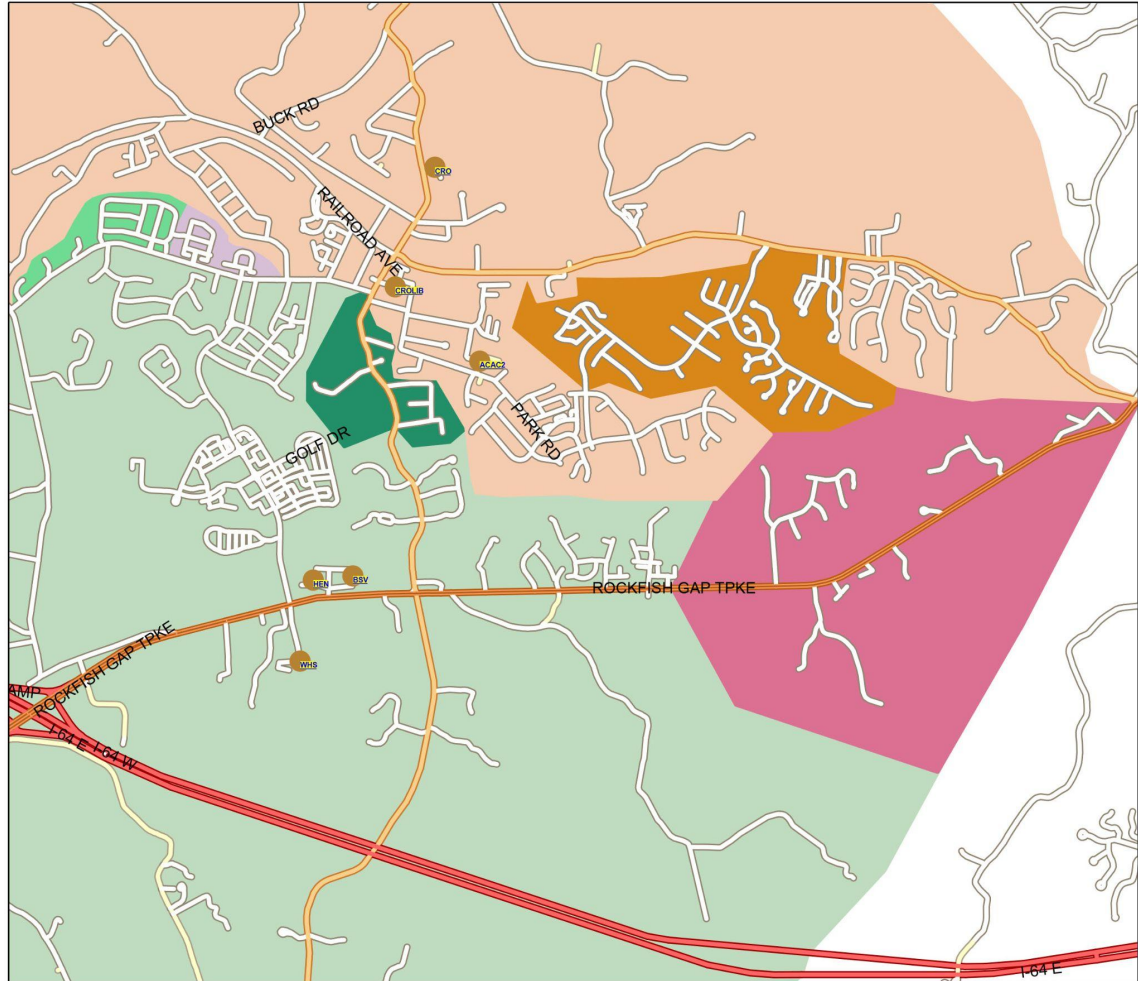
Waylands/Bargamin (32)

Western Ridge/Foothill  
Crossing/Wickham Pond (162)

**K-5 students moved: 245<sup>1</sup>**

**Total K-5 Crozet Students: 555**

**Total K-5 Brownsville Students: 491**



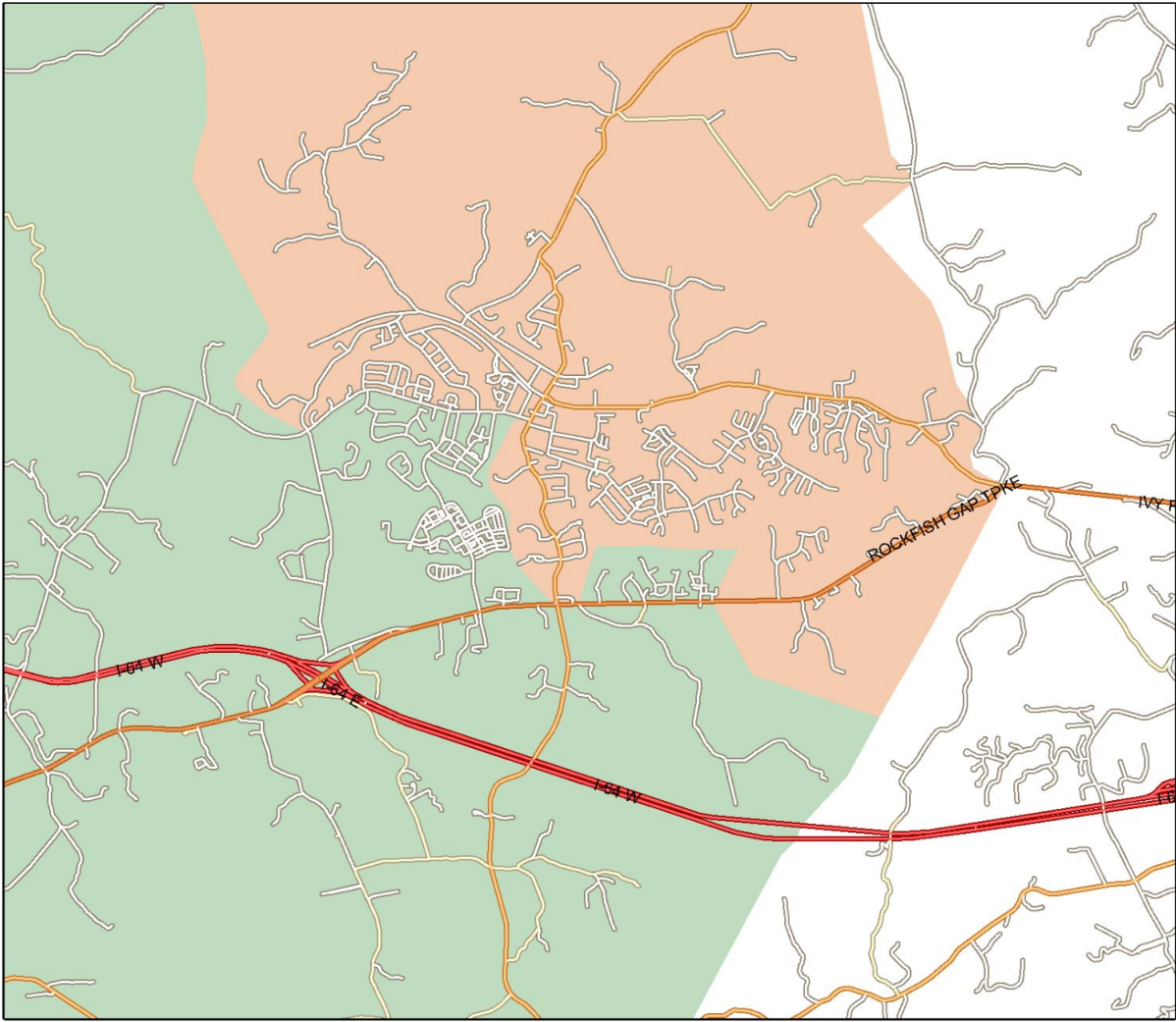
<sup>1</sup>Does not include preschool. Based on current year student information only and does not reflect future years.

## DEMOGRAPHIC IMPACT – SCENARIO 3

School		Race/Ethnicity			Economically Disadvantaged	English Learner	Difference in Enrollment
		Black	Hispanic/Latino	White			
Brownsville	Before	2.21%	4.42%	82.18%	12.02%	1.66%	-245
	After	2.77%	5.12%	82.73%	16.84%	1.28%	
Crozet	Before	1.56%	8.44%	84.06%	19.69%	2.19%	245
	After	1.39%	6.09%	82.78%	12.35%	2.26%	



# SCENARIO 4.1



# SCENARIO 4.1

East of Clover Lawn to Mechums River (19)

Grayrock (25)

Rt 240 from Jarmans Gap to Rt 250 (34)

Waylands/Bargamin (32)

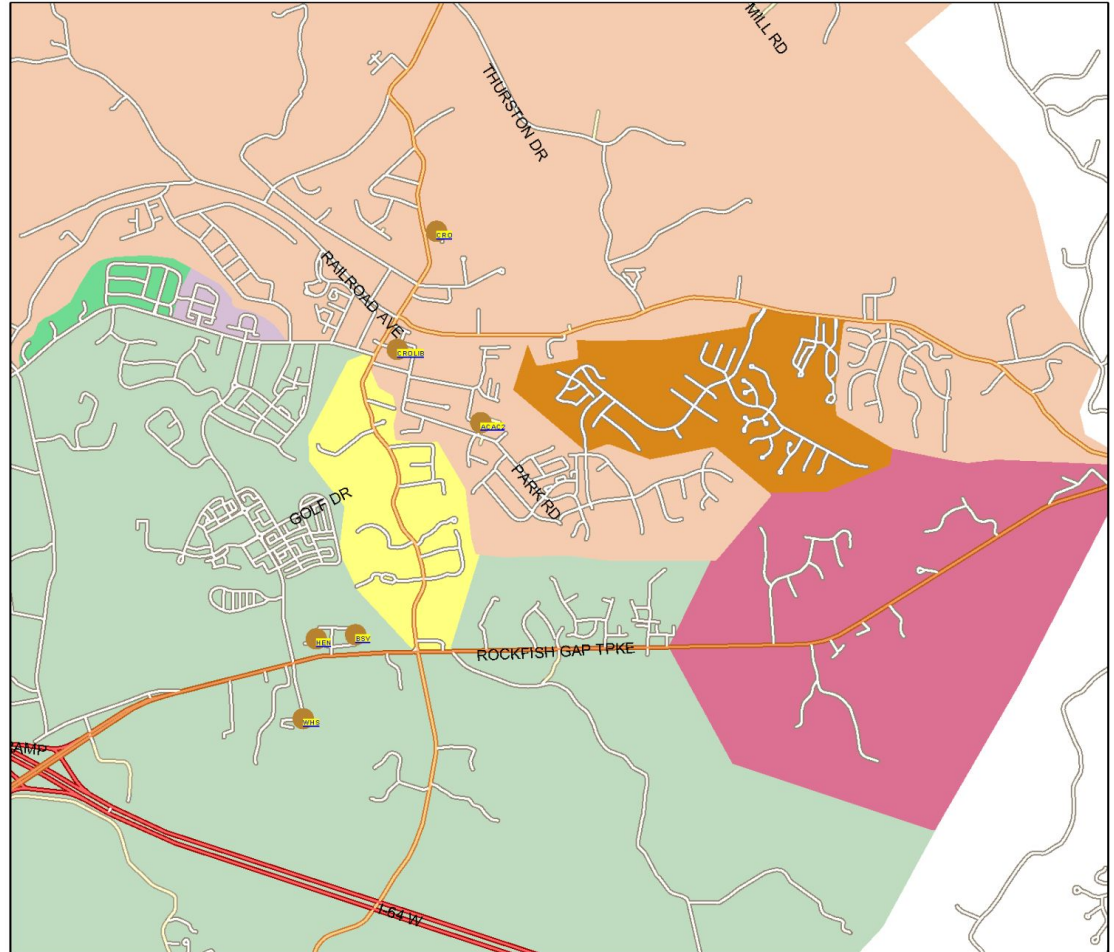
Western Ridge/Foothill

Crossing/Wickham Pond (162)

**K-5 students moved: 272<sup>1</sup>**

**Total K-5 Crozet Students: 582**

**Total K-5 Brownsville Students: 464**



<sup>1</sup>Does not include preschool. Based on current year student information only and does not reflect future years.

# DEMOGRAPHIC IMPACT – SCENARIO 4.1

School		Race/Ethnicity			Economically Disadvantaged	English Learner	Difference in Enrollment
		Black	Hispanic/Latino	White			
Brownsville	Before	2.21%	4.42%	82.18%	12.02%	1.66%	-272
	After	2.95%	5.44%	83.22%	17.91%	1.36%	
Crozet	Before	1.56%	8.44%	84.06%	19.69%	2.19%	272
	After	1.33%	5.80%	82.42%	11.77%	2.16%	



# SCENARIO FEEDBACK

# Community Feedback

The committee encourages feedback and is soliciting it through multiple avenues:

- In person tonight
- Email at any point in the process: [rac@k12albemarle.org](mailto:rac@k12albemarle.org)
- Electronic surveys distributed to the community.
  - Due by Wednesday, November 10 at midnight



## Next Steps

- Full presentation will be posted to website:
- "Redistricting Current Projects" Link on [www.k12albemarle.org/redistricting](http://www.k12albemarle.org/redistricting)
- Committee is scheduled to meet November 16
- Committee will present recommendation to Superintendent on November 29, 6:00pm
- Superintendent will present recommendation to School Board in December
- School Board Public Hearing and Action in January (Date TBD)